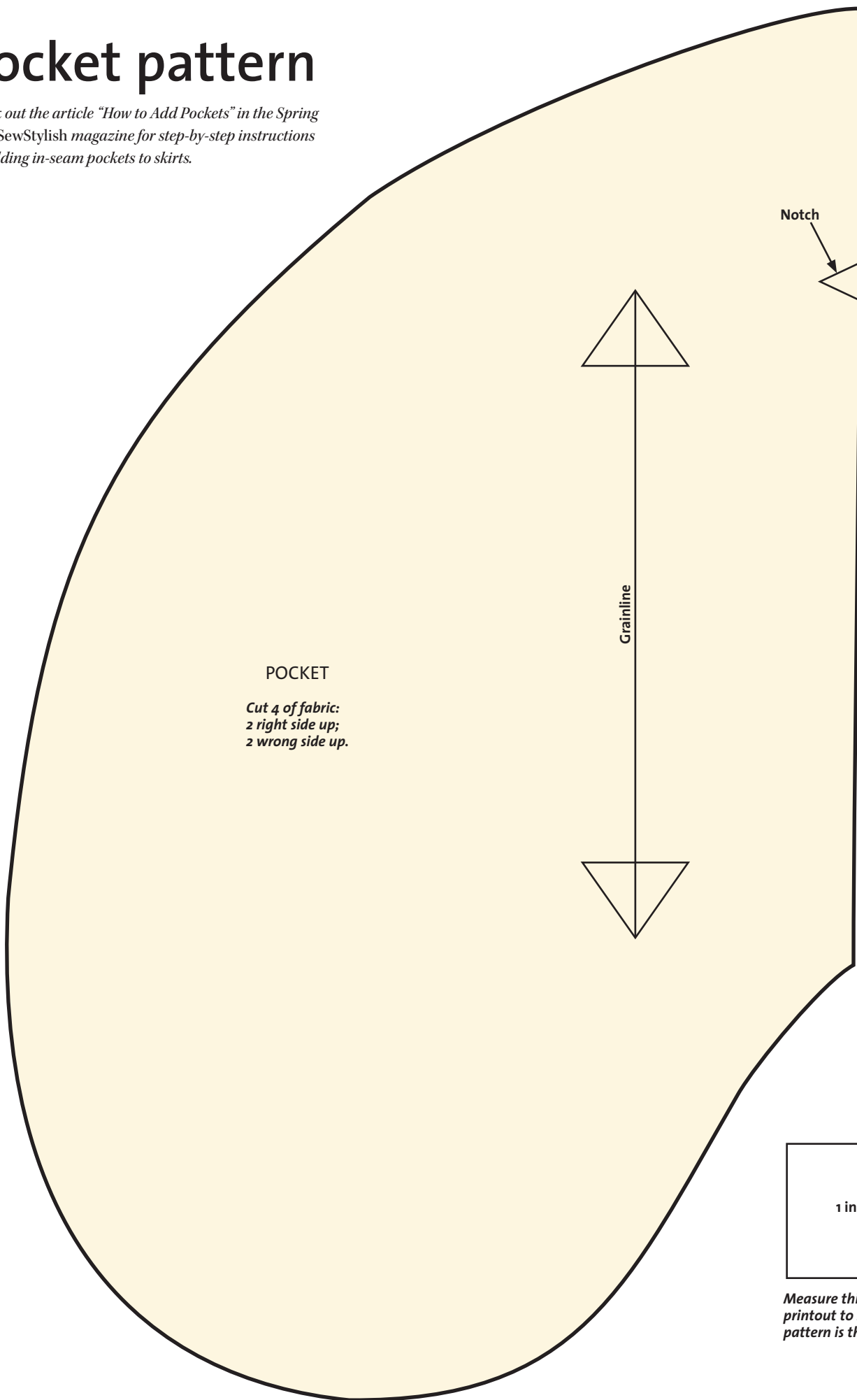


Pocket pattern

Check out the article "How to Add Pockets" in the Spring 2017 SewStylish magazine for step-by-step instructions for adding in-seam pockets to skirts.



POCKET

*Cut 4 of fabric:
2 right side up;
2 wrong side up.*

Grainline

Notch

1 inch

Measure this square on your printout to be sure your pattern is the correct scale.